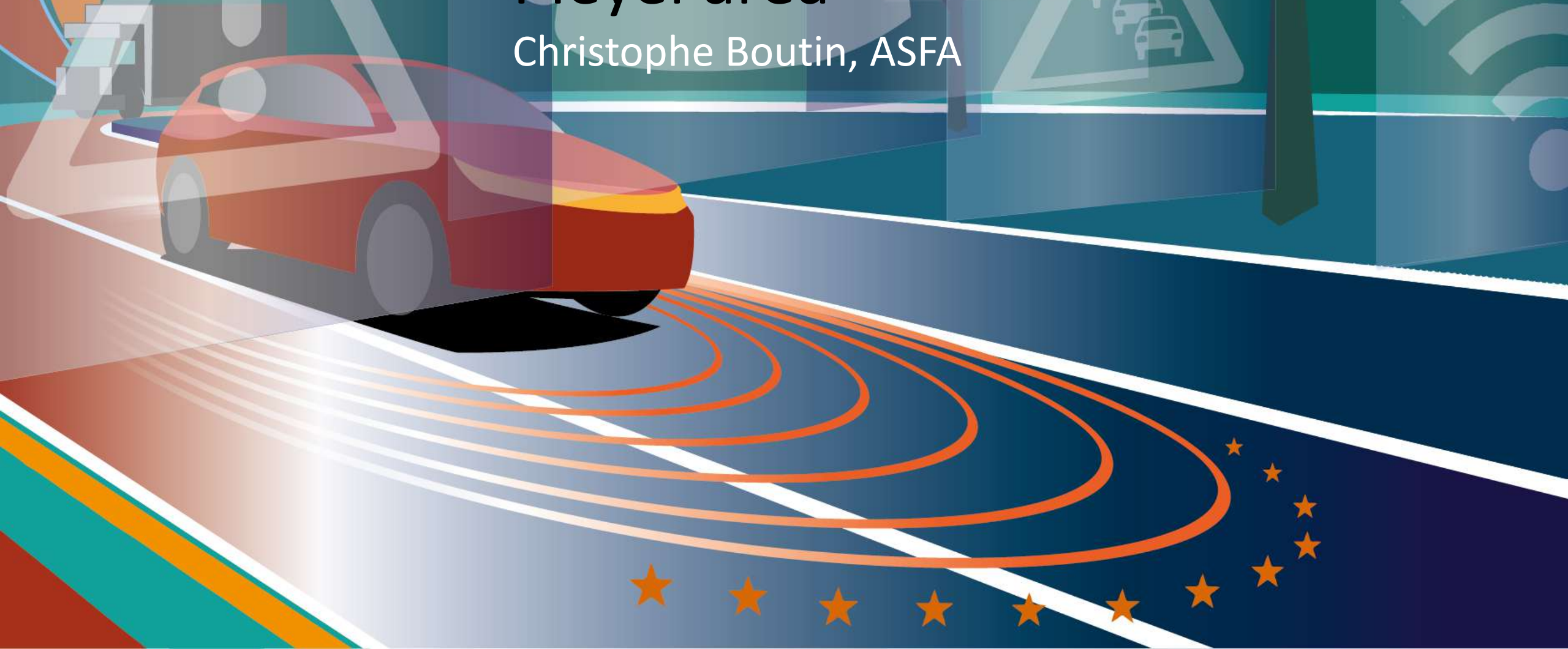




Nov. 14th, 2030 Welcome to Paris Pleyel area

Christophe Boutin, ASFA



- Urban mobility is increasing but is also evolving like never before
- Urban motorways will be at the heart of that evolution
- A major challenge of local authorities in big cities is to reduce traffic
- New challenges ahead in which motorway companies are willing to get involved

Easing urban mobility is the new frontier

North access: a mobility lab



- North access of Paris from Northern Europe and Charles de Gaulle airport presents the most important difficulties
 - A1 is one of the most congested highway in France
 - Railway networks are saturated
- With the « Grand Paris project » and the 2024 Olympic Games, this area will benefit from new transport infrastructures
 - CDG Express line, Grand Paris Metro lines, new Pleyel crossroads stations....
- Good opportunity to rethink the functionalities of the A1 motorway
 - Leveraging ITS functionalities to alleviate congestion and pollution in metropolitan areas

A trip to the future of Paris



- How can we imagine access to the North of Paris by 2030/2050 ?
 - redesigning the infrastructure to welcome new mobility usages
 - connecting highway with other transportation infrastructure
 - inventing ways which could be replicated to any important metropolitan areas
- A project launched by ASFA and achieved by a team of 9 students (engineers and architects) as part of their graduation project

The movie



<https://www.youtube.com/watch?v=kW7tn0lsXEw>

Christophe Boutin
Executive Director, ASFA

Thank you

christophe.boutin@autoroutes.fr